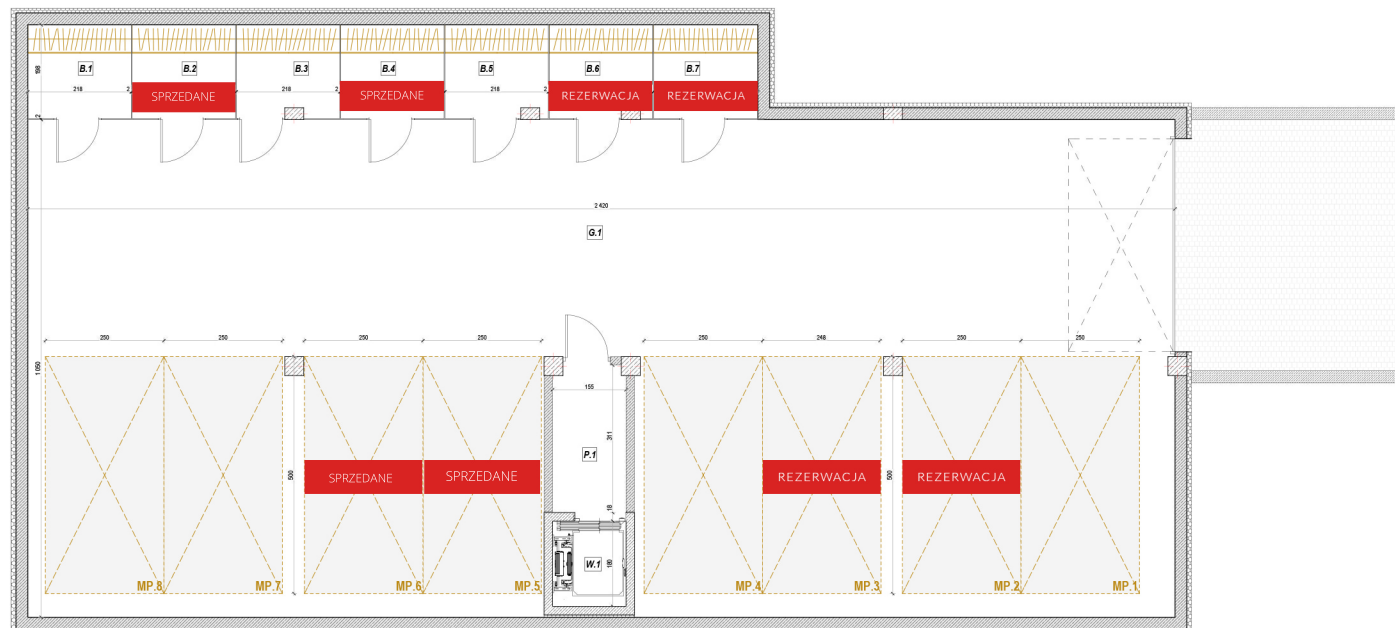
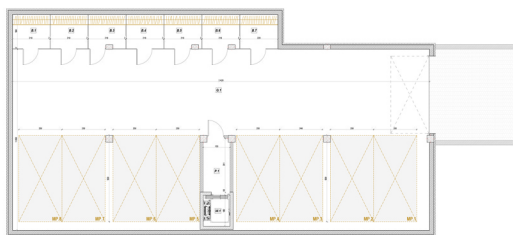


# APARTAMENTY KARSKIEGO 32



## Piwnica i garaż

B1, B2, B4	4,32 m <sup>2</sup>
B3, B5, B6	4,22 m <sup>2</sup>
B7	4,36 m <sup>2</sup>
G1	252,63 m <sup>2</sup>
P1	4,80 m <sup>2</sup>
W1	2,79 m <sup>2</sup>
Powierzchnia ciałkowiata	290,20 m <sup>2</sup>